

Tsin Bikéé' Knits

*Translation: Wooden Shoe Knits

A Design by Tressa Weidenaar



Pottery Shard Headband

I grew up appreciating Southwestern Native American pottery designs. These designs inspired this wide headband that is knit in the round with small amounts of yarn. The headband knits up quickly, and it is wide enough to fully cover the ears.

Difficulty Level

Intermediate: familiar with color-work charts.

Skills required

Cast on, working in the round on circular needles, working from charts, stranded color-work, bind off, weaving floats.

Size

One size - Adult Medium

Finished measurements after blocking

Circumference (unstretched): 20 inches; 51 cm

Height: 4 ¾ inches; 12 cm

Materials

- Worsted weight yarn in two highly contrasting colors. This sample was knit using Knit Picks Wool of the Andes 110 yds/50 grams.
 - ◆ Approximately 70 yards (64 meters) of Coal (MC).
 - ◆ Approximately 20 yards (18 meters) of White (CC).
- US Size 6 (4 mm) and 7 (4.5 mm), 16” circular needles.
- A beginning of the round stitch marker and (optional) 7 stitch markers of a different color.
- Yarn needle



Gauge

- 21.5 sts and 24 rounds = 4 inches (10 centimeters) in charted pattern after blocking using larger needles.

Note: There are long floats in this pattern. Make sure to weave them in approximately every 4 stitches. Stagger floats two or more stitches apart in each row so you don't make a noticeable line.

Here is a helpful link for how to weave floats <http://paper-tiger.net/blog/14117891>

Abbreviations

| | |
|-------|---|
| K | Knit |
| P | Purl |
| kfb | Knit into the front then back leg of stitch |
| k2tog | Knit two together |

| | |
|-----|--------------------|
| pm | Place marker |
| sts | stitches |
| BOR | Beginning of round |

Directions

Cast on 100 sts using smaller needles and MC.

Join for working in the round being careful not to twist sts, and place BOR marker.

K1, P1 for 4 rounds.

Change to larger needles.

Increase row: [K24, kfb] repeat three more times. 104 sts.

Join CC, begin chart and work *two* repeats around. Work 18 rounds of chart.

*Optional: On round 1, complete chart placing markers as follows: [K12, pm, k14, pm] repeat two more times, k12, pm, k14.

Break CC.

Decrease Row: K23, K2tog, [K24, K2tog] repeat two more times, K1. 100 sts. (Remove all but BOR stitch markers as you come to them.)

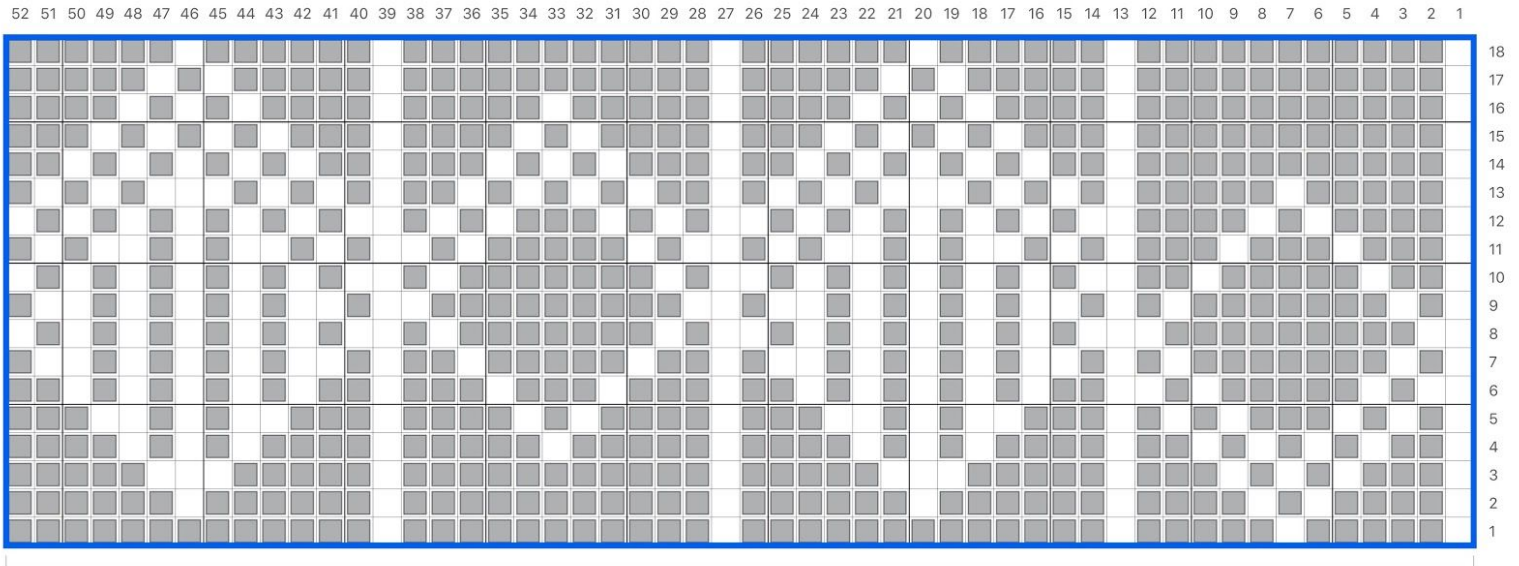
Change to smaller needles.

K1, P1 for 4 rounds.

Bind off loosely in pattern. Weave in ends and block to even out stitches.

Thank you for your interest in this pattern!
For questions contact me at: tsinbikeeknits@gmail.com
You can find me on Ravelry as Tsinbikeeknits and Instagram @tsinbikee
Photographs by Rachael Kass @letsflyawayshop

Pottery Shard Chart



Legend

| | |
|---|----|
| ■ | MC |
| □ | CC |

— pattern repeat