

# Tsin Bikéé' Knits

\*Translation: Wooden Shoe Knits

A Design by Tressa Weidenaar



## **Turquoise Rose Hat**

I love color work and have always admired the colorful designs of Pendleton blankets that I have seen around me my whole life. This hat reflects some of the color schemes from a blanket that I own.

This hat is knit in the round using small amounts of contrasting yarn colors to develop the design. It is a great scrap yarn project.

## Difficulty Level

Intermediate: Familiar with color-work charts.

## Skills Required

Cast on, knit, decreasing, working in the round on circular needles, working from charts, stranded color-work, weaving floats.

## Size

Adult Medium(Large). Size medium shown.

Finished measurements after blocking

**Circumference (unstretched):** 18 ½ (19 ½ ) inches; 47 (48.5) cm.

**Height from brim to top:** 9 (9 ½ ) inches; 23 (24) cm

## Materials

- Worsted weight yarn in five colors. This sample was knit using Knit Picks Wool of the Andes 110 yds/50 grams.
  - ◆ Approximately 82 (97) yards; 75 (98) meters of Marina (MC)
  - ◆ Approximately 10 yards; 9 meters each of Red (CC1), Orange (CC2), Semolina (CC3), and White (CC4).
- US Size 7 (4.5 mm) and 8 (5 mm), 16” circular needles
- US Size 8 (5 mm) double pointed needles
- A beginning of the round stitch marker and two stitch markers of a different color.
- Yarn needle.

## Gauge

21 sts and 23 rounds = 4 inches (10 centimeters) in charted pattern stitch after blocking using US 8 (5 mm) needles.

**Note:** Break yarn when changing colors.  
Weave floats that are longer than 5 stitches.  
Here is a helpful link for how to weave floats  
<http://paper-tiger.net/blog/14117891>

## Abbreviations

K	Knit
P	Purl
sts	stitches
k2tog	Knit two together



## Directions

Using a stretchy cast on (I used long tail) and smaller needles, cast on 96(102) sts. Join for working in the round being careful not to twist sts, and place beginning of the round marker.

K1, P1 rib for 6 rounds.

Change to larger needles

Set up round:

*Size medium:* K37, place marker, k23, place marker, k36.

*Size large:* K40, place marker, k23, place marker, k39.

Complete 25 rows of charts as follows:

*Size medium:* Starting with Chart 1, row 1, knit first stitch, then knit the pattern repeat 3 times. Slip marker. Move to the Main Chart and knit row 1. Slip marker. Move to Chart 3 and knit the pattern repeat 3 times. Continue this sequence for remaining 24 rounds.

*Size large:* Starting with Chart 1, row 1, knit first four stitches, then knit the pattern repeat 3 times. Slip marker. Move to the Main Chart and knit row 1. Slip marker. Move to Chart 3 and knit the pattern repeat 3 times then knit last three stitches on the chart. Continue this sequence for remaining 24 rounds.

Using main color, continue knitting in stockinette until hat measures about 5 ½”.

*Large only:* [K15, k2tog] repeat around. 6 sts decreased. (96 sts)

Begin decreases (switch to Double Pointed Needles when needed)

Rnd 1: [K10, k2tog] repeat around (88 sts)

Rnd 2: Knit

Rnd 3: [K9, k2tog] repeat around (80 sts)

Rnd 4: Knit

Rnd 5: [K8, k2tog] repeat around (72 sts)

Rnd 6: Knit

Rnd 7: [K7, k2tog] repeat around (64 sts)

Rnd 8: Knit

Rnd 9: [K6, k2tog] repeat around (56 sts)

Rnd 10: Knit

Rnd 11: [K5, k2tog] repeat around (48 sts)

Rnd 12: Knit

Rnd 13: [K4, k2tog] repeat around (40 sts)

Rnd 14: Knit

Rnd 15: [K3, k2tog] repeat around (32 sts)

Rnd 16: Knit

Rnd 17: [K2, k2tog] repeat around (24 sts)

Rnd 18: Knit

Rnd 19: [K1, k2tog] repeat around (16 sts)

Rnd 20: [K2tog] repeat around (8 sts)

Break yarn and draw through remaining sts. Pull tight and weave in ends.

Wet block over a small ball (if possible) and smooth out stitches.



Thank you for your interest in this pattern!

For questions contact me at:

[tsinbikeeknits@gmail.com](mailto:tsinbikeeknits@gmail.com)

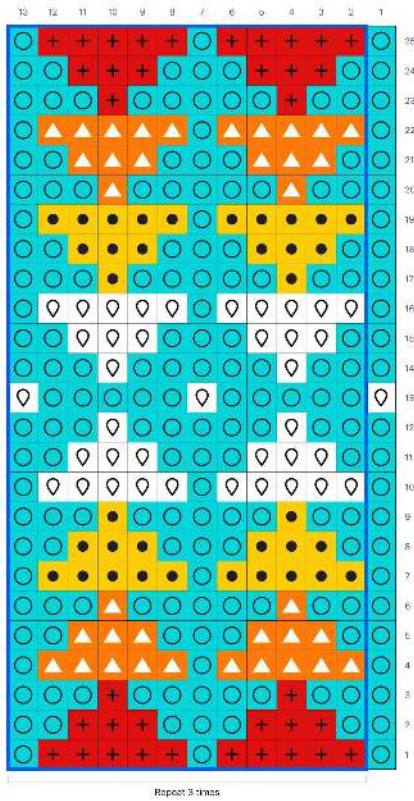
You can find me on Ravelry as Tsinbikeeknits

and Instagram @tsinbikee

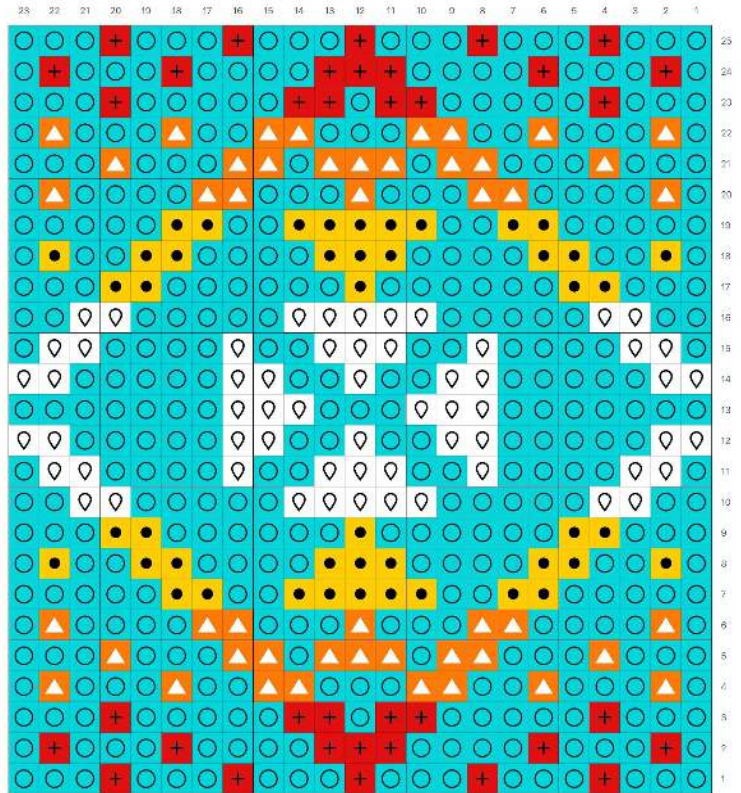
Photographs by Rachael Kass @letsflyawayshop

# Size Medium Charts

## Chart 1



## Main Chart

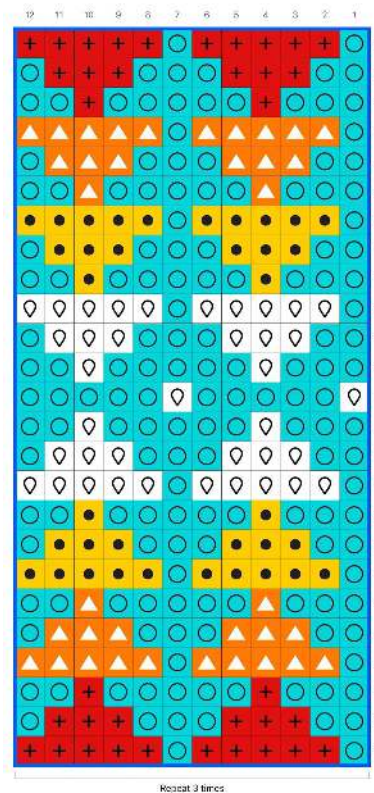


## Legend

	MC
	CC1
	CC2
	CC3
	CC4

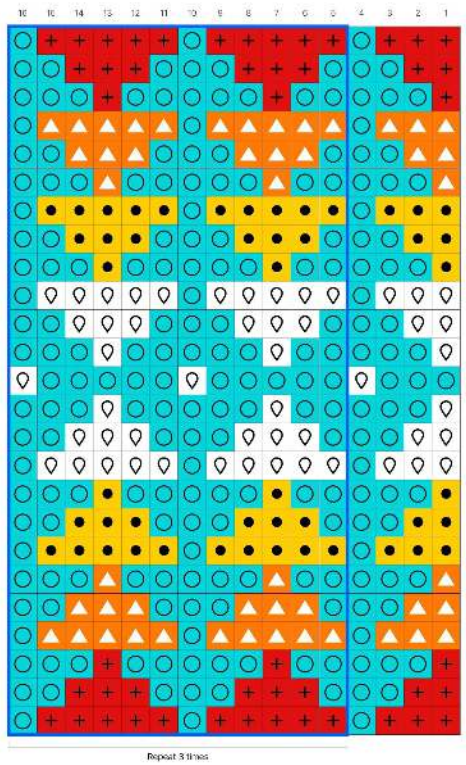
— Pattern repeat

## Chart 3

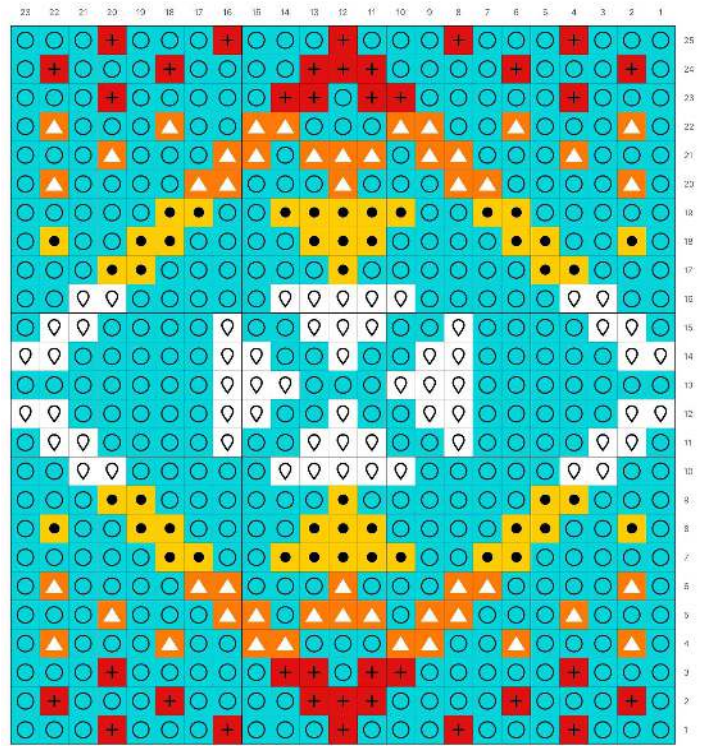


# Size Large Charts

## Chart 1



## Main Chart



## Legend

	MC
	CC1
	CC2
	CC3
	CC4

— Pattern repeat

## Chart 3

