

Tsin Bikéé' Knits

*Translation: Wooden Shoe Knits

A Design by Tressa Weidenaar



Twin Lakes Cowl

Twin Lakes is a place north of Gallup, NM where my dad grew up. When we go out to visit my grandma, I marvel at the colors that are easy to overlook. Brownish reds, blue sky, and cream colors are easy to spot which is where I found my inspiration for this cowl. It is easy to find pieces of broken pottery from the ancient civilization that existed long ago in the fields all around. Designs like these are still visible on the pieces. This cowl is knit in the round using three contrasting colors.

Difficulty Level

Intermediate: familiar with color-work charts.

Skills required

Cast on, working in the round on circular needles, working from charts, stranded color-work, bind off, weaving floats.

Size

One size.

Finished measurements after blocking

Circumference: 24 inches; 61 cm

Height: 11 inches; 28 cm

Materials

- Worsted weight yarn in three colors. This sample was knit using Brooklyn Tweed Shelter 140 yds/ 50 grams.
 - ◆ Approximately 120 yards (87 meters) of Fossil (MC).
 - ◆ Approximately 40 yards (36.5 meters) of Almanac (CC1).
 - ◆ Approximately 65 yards (59.5 meters) of Wool Socks (CC2).
- US Size 7 (4.5 mm), 24” needles, or size needed to obtain gauge.
- A BOR marker and (optional) 5 markers of a different color or style.
- Yarn needle

Gauge

- 20 sts and 24 rounds = 4 inches (10 centimeters) in charted pattern after blocking.

Note: There are long floats in this pattern. Make sure to weave them in every 4 or so stitches staggering so you don't make a line.

Here is a helpful link for how to weave floats <http://paper-tiger.net/blog/14117891>

Abbreviations

CC1	contrasting color 1
CC2	contrasting color 2
k	knit
MC	main color
pm	place marker
p	purl
rep	repeat
rnd(s)	round(s)
st(s)	stitch(es)



Directions

Begin ribbing

Using long tail and CC2, cast on 120 sts.

Join for working in the round being careful not to twist sts, and place BOR marker.

Rnd 1: [K1, P1] rep around.

Rep last rnd 3 times more. Break CC2.

Join MC and knit 1 rnd.

Begin colorwork chart

Rnd 1: Work 20 st rep 6 times around.

Work the chart pattern once through rnd 32, then work rnds 1-25.

*Optional: pm after each repeat.

Break CC1 and MC.

Next rnd: Join CC2 and knit 1 rnd (removing all but BOR markers).

Begin ribbing

Rnd 1: [k1, p1] repeat around.

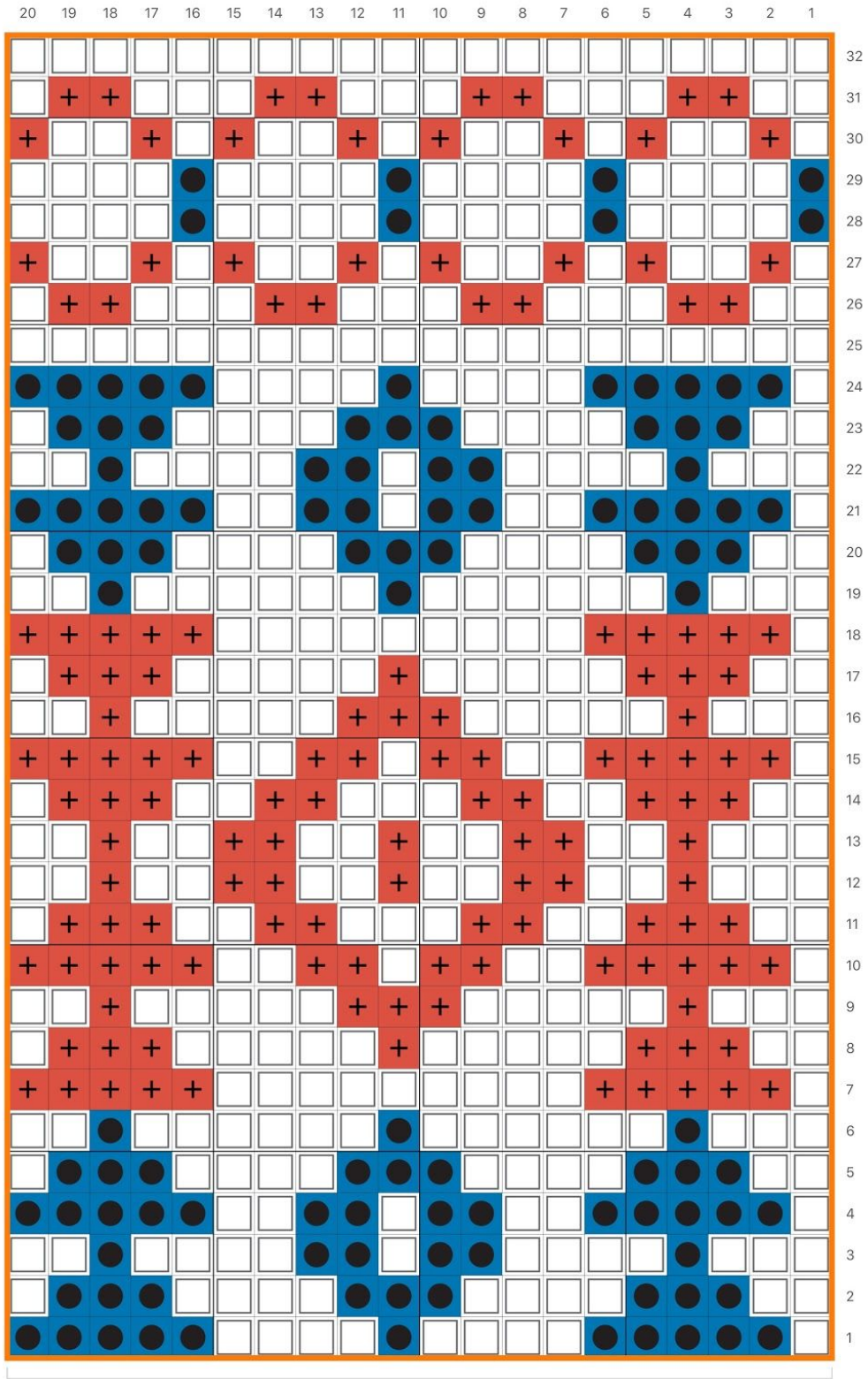
Rep last rnd 3 times more.

Bind off loosely in rib.

Finishing




Weave in ends using a tapestry needle and block to finished measurements.

Chart



20 stitch repeat

Legend

	MC
	CC1
	CC2